

BIJLARD[®]





PROFESSIONAL ADHESIVES



...a Bond you can trust!

WWW.BIJLARD.COM

CONTENT

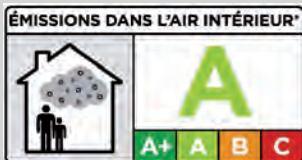
| | | |
|--|--|---------|
|  | Neoprene Contact Adhesives & Equipment | page 4 |
|  | Cleaners, Thinners & Degreasers | page 6 |
|  | Wood Adhesives & Equipment | page 8 |
|  | Dynea | page 10 |
|  | Polyurethane Adhesives | page 11 |
|  | MS Polymer Adhesives | page 12 |
|  | Kit guns for polymer adhesives and floor adhesives | page 14 |
|  | Private Label | page 15 |
|  | Bijlard FLOOR-range | page 16 |
|  | Bijlard Specials | page 20 |
|  | Hand Tools | page 21 |
|  | Vacuum Technology and Tapes | page 22 |
|  | Abrasives | page 23 |

CREDITS

BIJLARD INTERNATIONAL

Platinastraat 141
2718 SR Zoetermeer
The Netherlands
Phone: +31 (0) 79 - 343 75 38
e-mail: info@bijlard.com

WWW.BIJLARD.COM



Established in 1956, Bijlard International has been at the forefront of developing, manufacturing and distributing adhesives to the wood, interior construction and flooring industries for professional and trade end users. In fact many of those customers who joined us in those early years, still purchase their products and services from us, giving testament to the long standing, added value partnerships that we seek to establish.

Our adhesives and sealants are designed to specifically meet customers' requirements and our rigorous quality control procedures ensures that each batch manufactured matches meets the agreed quality specifications.

New product development is the core focus of our business where we continually assess new materials, evolving industry quality and environmental standards and improved manufacturing techniques - ensuring that we keep ourselves and in turn our customer offering at the leading edge of our chosen markets.

Our knowledge and advice can help you improve your applications, minimise potentially damaging quality issues and ultimately add value to your process - Bijlard International delivers -a bond you can trust!

SALES AND ACCOUNT MANAGERS



TED ENGELEN

Sales Manager
Phone: +31(0)6-22452747
ted@bijlard.com



SVEN WESTERHOLT

Account Manager
Phone: +31(0)6-20600395
sven@bijlard.com



DICK HEIJSTER

Account Manager
Phone: +31(0)6-38826716
dick@bijlard.com



BRAM VAN DER BOON

Account Manager Region East en North
Phone: +31(0)6-13069923
bram@bijlard.com

NEOPRENE CONTACT ADHESIVES



aromatic free



aromatic free



CONTACT KIT

Non-aromatic universal liquid contact adhesive. Heat-resistant up to +70°C. Can be combed or brushed.

CONTACT TIX

Non-aromatic universal thixotropic contact adhesive. Does not drip. Suitable for vertical applications. Pre-application unnecessary. Heat-resistant up to +70°C.

SPRAY 2514

Highly heat-resistant +180°C sprayable contact adhesive based on neoprene rubber. Specially made for among others surface adhesion of HPL laminates. Thanks to its high initial adhesion, extremely suitable for among others post-formed elements.



aromatic free



aromatic free



SPRAY TRANSPARENT AND RED

Sprayable transparent/red non-aromatic universal contact adhesive. Heat-resistant up to +180°C. High initial adhesion and final bonding strength. Sprayable with gravity feed spray gun, pressure vessel or spray unit.



CONTACTGLUE 2921

Highly heat-resistant +180°C contact adhesive specially developed for use in a curtain coater (pouring machine) in cases of very large industrial production volumes. Contains toluene.

Check www.bijlard.com for different volumes



aromatic free

SPRAY 0099 CLASSIC MIST SPRAY

Contact adhesive in spray can for both permanent and repositionable joints. The adhesive has a wide area of application and is extremely suitable for bonding: upholstery fabrics, floor coverings, carpet tiles, underlay, foam rubber, cardboard, paper, expanded polystyrene, textiles, felt and insulating materials for the building trade and in the home. Spray pattern mist.



aromatic free

SPRAY 0023 HIGH TACK WEB SPRAY

Contact adhesive in spray can with a high initial adhesion. Extremely suitable for bonding many types of furniture foams, such as latex, polyether and polyurethane foams. Can also be used for fixing underlay, many types of carpet tiles and carpet. Multi-adjustable spray distribution. Spray pattern web.



SPRAY B100 HEAVY DUTY WEB SPRAY

Contact adhesive in spray can with an extremely high initial adhesion. For the fast, clean, easy and economic bonding and assembly of materials in furniture or related applications up to +50 °C. Spray pattern web. Ideal for bonding latex, polyether and PUR foam, felt, fabrics, paper, cardboard, fibreboard, insulating material to itself or to wood, stone, steel etc. Multi-adjustable spray distribution.



aromatic free

GLUE TANK 803

Non-aromatic and heat-resistant +110°C contact adhesive packaged in a ready-to-use glue tank. Processing is possible with the professional spray gun supplied with the system and without the need for a compressor. An ideal solution for working on site. The adhesive has high initial adhesion and a favourable curing and working time. Available in red and transparent versions.

SPRAY 0099

Universal spray adhesive (contact adhesive), extremely suitable for bonding upholstery, floor coverings, carpet tiles, underlay, foam rubber (flakes, seats, backrest filling etc.)

SPRAY 0023

Spray adhesive (contact adhesive) with high initial adhesion. Extremely suitable for bonding many types of furniture foams, such as latex, polyether and polyurethane foams.

SPRAY 0044

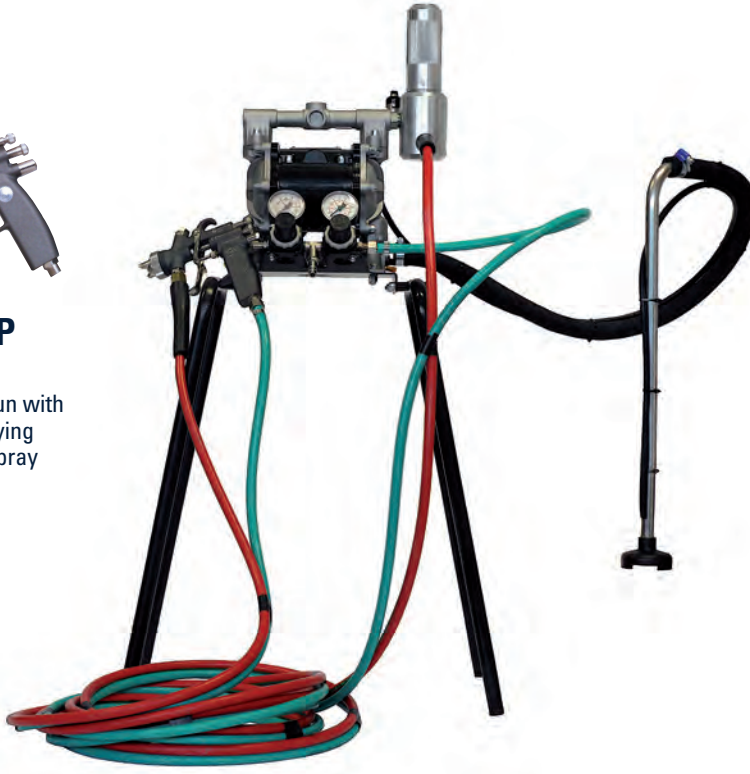
Spray adhesive (contact adhesive) has been developed among other things for foam joints. Decorative purposes, both permanent and temporary adhesion for paper, cardboard, wood, textiles and various types of plastic.

EQUIPMENT



GRAVITY CUP SPRAY GUN

Walther Pilot III F Gun with gravity cup for spraying contact adhesive [spray adhesive]



MEMBRANE PUMP

Membrane pump on tripod for spraying contact adhesive (spray adhesive) from 10L or 25L container. 200L vessel.



PRESSURE VESSEL ON WHEELS

Pneumatic pressure vessel on wheels for spraying contact adhesive (spray adhesive).

CLEANERS, THINNERS & DEGREASERS



THINNER

For thinning neoprene contact adhesive, cleaning and cleansing the adhesive surfaces, removing traces of adhesive and cleaning tools.

THINNER 901

Mixture of solvents specifically composed for use with Ankerweld Gietlijm 2921.



CITRONEL

Biological cleaner based on citrus terpenes. For degreasing and cleaning many types of surfaces and for removing traces of contact adhesive, ink, oil and grease.



CLEANER CS 60

Professional cleaner with extremely good cleaning and degreasing properties based on pure propanone. Cleaner CS 60 is extremely suitable for removing all wet glue residue and many dried up glue residue.



WOOD ADHESIVES & EQUIPMENT



WOOD GLUE 1KD2

High-grade white wood adhesive D2 for indoor applications. Transparent when dry. Without filler. Based on PVAc.

* Open time \pm 8 minutes. Pressing time 1-2 hours.

WOOD GLUE 1KD2 FAST

High-grade extremely fast drying white wood adhesive D2 for indoor applications. Transparent when dry. Without filler. Based on PVAc.

* Open time \pm 5 minutes. Pressing time 5-10 minutes.

WOOD GLUE EXPRESS 25

High-grade moisture-resistant yellow coloured wood adhesive, extremely suitable for bonding red and/or white deal. Without filler. Complies with standard NEN-EN 204 D2. Based on PVAc

* Open time \pm 8 minutes. Pressing time 1-2 hours.

WOOD GLUE 1KD3

Waterproof white wood adhesive. Waterproof in compliance with EN standard 204 D3 (DIN 68602 B3). Fast-drying. Transparent when dry. Without filler. Based on PVAc.

* Open time \pm 8 minutes. Pressing time 30-60 minutes.

WOOD GLUE 1KD4 WITH KOMO

1-component weather and seawater resistant white wood adhesive (D4) based on PVAc.

Transparent when dry. Without filler. This adhesive complies with standard NEN EN 204 D4 and WATT 91 and has the KOMO approval 'adhesive for non-bearing applications'. No. 32936.

* Open time \pm 8 minutes. Pressing time 30-60 minutes.

EQUIPMENT

< PNEUMATIC VESSEL A8

Pneumatic 8 litre pressure vessel for the application of white PVAc wood adhesives with a universal gun.

Accessories for applications including surface, mortise and tenon, nail punch, groove, dowel, Lamello and spring adhesion can be supplied. Suitable for Houtlijm 1KD2, 1KD2 Snel, Express 25, 1KD3, MP13 en 1KD4.

> PNEUMATIC VESSEL A12

Pneumatic 12 litre pressure vessel for the application of white PVAc wood adhesives. Especially suitable for spraying Houtlijm 1KD3 Spray and Houtlijm V7.





WOOD GLUE 1KD3 SPRAY

Sprayable waterproof white wood adhesive. Waterproof in compliance with EN standard 204 D3 (DIN 68602 B3). Dries transparent. Without filler. Based on PVAc.

* Open time ± 10 minutes. Pressing time 20 minutes.



WOOD GLUE MP 13

Highly viscous and waterproof white wood adhesive (D3) in compliance with EN standard 204 D3 (DIN 68602 B3). Dries transparent. Without filler. Based on PVAc.

* Open time ± 10 minutes. Pressing time 30-60 minutes.



WOOD GLUE V7

Waterproof form-retaining wood adhesive (D3). Fast setting time, guaranteeing excellent form-retaining properties thanks to its hardness. With veneer bleed prevention additive. Based on PVAc.

* Open time ± 10 minutes. Pressing time 20 minutes



RS 80 CLASSIC

Extremely high-grade 2-component wood adhesive. For bonding bearing structures and joints of many different wood types for which extremely high requirements are set. Based on resorcinol and paraformaldehyde.

* Open time 10 minutes Pressing time 5 hours.




VISIT US
ON
FACEBOOK

Bijlard International has been an agent and distributor for the renowned Dynea brand since 2012.

Bijlard primarily supplies Prefere glues to industrial and wood-processing companies, which use them for load-bearing and non-load-bearing structures. These glues are ideal for situations in which structures need to be bonded together quickly, within just 30 to 180 seconds.

The Prefere MUF, UF and EPI glues are an excellent addition to the extensive range of wood glues that Bijlard International already offers and are the eyes and ears of Dynea in the Benelux market. The intensive collaboration that exists between the two companies guarantees end users the perfect product for their specific needs.



*Dedicated to Wood
Adhesives*

MORE ABOUT DYNEA

Dynea innovates, develops, manufactures and markets wood adhesives solutions for customers in Europe. The chemistries range from amino based resins to polyurethanes, emulsion polymers and hot-melt. With in-depth chemical expertise and decades of experience, Dynea provides high-performance, complete chemical solutions that include adhesives, equipment, tools, software and consulting services.

In addition to speciality wood adhesives, Dynea also supply additives to the coating industry, foundry resins, insulation resins and other related products.

Our activities include:

- Wood Adhesives Solutions, Technologies and Services
- Industrial Coatings Additives
- Formaldehyde manufacturing plant design and licencing.
- Services, including Tank Cleaning services, Analytical services, Chemical regulatory services and Tolling services.

Dynea is an independent company, owned in full by private Norwegian investors, management and employees. Total turnover was approx. 950 mill. NOK (110 mill. euro) in 2014, and sold approximately 150 000 mt of products. Dynea employs around 200 dedicated adhesive professionals.

Dynea can look back on a long history, dating back to 1947. Until 2000, the company was part of the listed industrial group Dyno, where it constituted the group's chemical business area. In 2000, the company became part of the newly formed Dynea Group where the resins and adhesives activities of Dyno, Neste Chemicals and Perstorp were merged. The Dynea Group was dismantled and divested in parts from 2007 to 2013, when the current Dynea was created and sold to Eltek Holding in Norway.

WHERE WE DO BUSINESS

Dynea is leader in the European wood adhesives market with a broad portfolio of adhesives for the wood processing industries. Dynea also has sales to customers in Asia, Africa and the Americas. Dynea headquarters and main site is in Lillestrøm, Norway. Other sites include Dynea Hungary, and Nordalim (Denmark). In addition there is toll production/contract manufacturing in Germany, Finland, the Netherlands, Austria and Italy.

For more information about Dynea products in the Benelux, please contact Mr. Ted Engelen, Sales Manager from Bijlard International.

Phone: +31 (0)6 – 22 45 27 47
E-mail: ted@bijlard.com





PU-TX

Thixotropic, (sea) water-resistant, 1-component polyurethane wood adhesive for inside and outside. Does not drip. For bonding wood and in combination with other materials, such as metal, concrete and plastic.



PU-CLASSIC

Fluid, (sea) water-resistant, 1-component polyurethane wood adhesive for inside and outside. For bonding wood and in combination with other materials, such as metal, concrete and plastic.



PU-2K-7 MIX

Very high-grade professional high viscosity 2-component adhesive based on polyurethane. Universal, very strong, weather and (sea) water resistant, heat and cold resistant, solvent-free caulking compound. Extremely suitable for glueing materials and material combinations that are difficult to bond, for achieving very strong joints, or when resistance to extreme conditions is required.

MS POLYMER ADHESIVES



CS 60

Elastic adhesive that can be painted over based on MS polymer. For both bonding, assembly and sealing of virtually all materials used in the construction industry and (even moist) surfaces.



CS HIGH TACK

Elastic assembly adhesive that can be painted over, based on MS polymer with extremely high initial adhesive power. For the structural bonding of virtually all materials used in the construction industry and (even moist) surfaces.



CS 40 TRANSPARENT

Transparent elastic adhesive that can be painted over based on MS polymer. For both bonding and sealing virtually all materials used in the construction industry and (even moist) surfaces.



GLAZING 3.0 SEALANT

A professional, durable, highly UV-resistant, elastic, dry, smoothable and repaintable MSP-based glazing sealant.

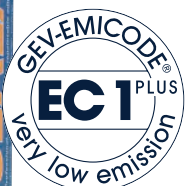
For top and bead seals in glazing systems. In accordance with NPR 3577 for single-glazed glass, double-glazed glass, laminated glass, burglar-proof glass and self-cleaning glazing. It can be used to seal connection joints, which can then be repainted. It is also suitable for anyone wanting to repair existing MSP-based joints.



STONEFLEX

STONEFLEX is a professional, high-quality, permanently elastic sealant with an MSP-based cement structure.

STONEFLEX has a specific cement structure that enables it to blend perfectly into the materials around it. Because of its elastic nature, it is able to continually absorb movement, making it ideal for all connection and expansion joints, such as joints between façade components, connection joints around window frames and expansion joints in masonry and concrete, etc.



SPRAY SEALANT

A high-grade sealant for repairs or to protect surfaces, for among others the automotive sector. Can be applied as a spray using a special spray gun (sealant gun Jetflow3). Also intended for the sustainable protection of building sections against mechanical vibrations. Seams, cracks and connections in metal constructions around pipes, gutters and air ducts. Adheres without primer to virtually any surface. If the surface is very porous, use primer CS60.



CS FLOOR & WALL

Elastic, 1-component solvent-free wall and floor adhesive based on MS polymer. For bonding parquet and/or carpet (no PVC) on both porous and non-porous surfaces such as concrete, cement, anhydrite, wood, chipboard, boarding, HPL, metals, HI-MACS[®] and similar.



New Formula!

MS PRIMER CS 60

NEW FORMULA!

Transparent 1-component moisture-curing primer based on ms-polymer. Especially suitable for the pre-treatment of timber framework and surfaces such as wood, stone and concrete. Environmentally and people friendly!

BIJLARD[®]
PROFESSIONAL ADHESIVES

MISTER POLY&MORE

INSEPARABLE JOINT

Ad Hesia
professional connector

WWW.BIJLARD.COM

KIT GUNS



PRO 2000
Fully enclosed lightweight plastic air kit gun for cartridges.



CHILTON
Sealant applicator suitable for cartridges.
310 ml cartridges.

New generation of air kit guns for cartridges and sachets



FLOOR PRODUCT

ELECTRAFLOW FLOOR-FIX
Battery-driven for 3kg sachet.
The ideal solution for the efficient adhesion of wood and parquet floors.



AIRFLOW III
Aluminum housing for cartridges and sachets.
Automatic vent valve and pressure regulator 1-8bar.



JETFLOW III
Lightweight air kit gun for use with sprayable MS Polymer CS Spray in cartridges and sachets.

PRIVATE LABEL

QUALITY IS ALWAYS IN THE NAME!

To support your own corporate identity, you can provide the Bijlard International quality products with your own logo and name.

Of course there is competition from other suppliers of comparable products, but there is nobody that equals your production. Better sales margins in the knowledge that product quality is guaranteed by Bijlard International. And... Made in Holland of course.

Contact your Bijlard International account manager and ask about the options!





EMICODE

Clean indoor air – for your health and environmental protection!

People tend to spend more and more time indoors. Therefore, indoor air quality and emissions from indoor installation materials on floors and walls are increasingly becoming more important.

In order to achieve a healthy living environment it is important to pay attention to ingredients of materials for flooring installation, and construction products such as insulation panels, adhesives or seals. To ensure greatest possible protection regarding health, environmental and indoor air hygiene, you should rely on materials awarded the EMICODE® label. They are very low in emissions, meet the strictest tolerances and standards and are permanently monitored by independent inspection bodies.

As a result, EMICODE® guarantees a clean and safe indoor air quality for years to come – for a healthy and comfortable indoor climate.



MS 2K FLOOR

The MS 2K FLOOR is a specially developed environmentally friendly, super-fast 2-components glue that is fully loaded after 2 hours. Thanks to its unique formula, the adhesive is twice as strong, prevents sweating and is also suitable for absorbing differences in height between wood and underfloor, up to 100%. For bonding all types of parquet and intermediate floors, where speed is important.

MS FLOOR

Is an elastic, 1-component solvent-free parquet adhesive based on MSP, which hardens under the influence of air humidity. For bonding parquet on all possible subfloors without primer. Suitable for damp spaces. Sound absorbing and permanently elastic. Suitable for underfloor heating and cooling. Anhydrous so that wood will not expand.

PVC GLUE FLOOR

PVC LIJM FLOOR is a solvent free PVC and vinyl adhesive based on acrylic dispersion with a very high initial adhesion. For glueing PVC, vinyl and rubber floor coverings in strips and tiles on to the most common substrates. Can also be used as a universal adhesive for all common types of soft and semi-soft floor covering for interior use on floors and walls. You can put on the PVC GLUE FLOOR with the new Sqraper[®] A3.



GAP FILLER FLOOR

For fast and proper filling of hollow spaces under all types of parquet, including all tapis floors, without any softener escaping. Can be used for all common underflooring. GAP FILLER FLOOR is anhydrous, which means the wood will not expand. Sound absorbing thanks to its permanent elasticity. Suitable for underfloor heating.



FLEXX FLOOR

A high-quality elastic, filling and non-shrink, knife and groove adhesive based on MSP. The product is solvent free. Especially useful for crack-free bonding of all types of laminate and parquet floors. The elasticity of the FLEXX FLOOR ensures that the natural stress of the wooden floor will be absorbed properly.



SKIRTING KIT

High-grade adhesive based on MS Polymer with extremely high initial adhesion (tack) for bonding for instance plinths, wall panels, floors, ceilings etc. Strutting or clamping is not required.



New Formula

MS MULTIPRIMER FLOOR

NEW FORMULA!

Transparent 1-component moisture-curing primer based on MS polymer. For reinforcing highly absorbent floors and solid or silty subfloors. Isocyanate-free so environmentally and people-friendly!



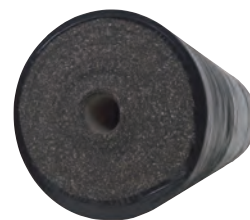
AQUA UNI PRIMER FLOOR

This is a ready-made primer based on Styrene Acrylic, for sealing and/or strengthening strongly absorbent and non-absorbent surfaces. Quick-drying, universally applicable, water and alkali-resistant, solvent-free, very low consumption, applicable for underfloor heating.



EPOXY SCHEM

2-component primer based on epoxy resin. For sealing and/or strengthening highly absorbent and solid or sanded surfaces. Particularly where heavy levels of use are expected. Can also serve as a seal against capillary rising damp or residual moisture in concrete and screed floors to 7 CM-%. Can be bonded immediately using PU2K or MS-FLOOR. Suitable for underfloor heating.



BIJLARD UNDERFLOOR

A structure-borne noise damping underlay based on a cork-rubber polyurethane granule mixture. Suitable as a structure-borne noise damping underlay and as a heat-insulating underlay, thus improving walking comfort.

SEAMING GLUE

Waterproof white PVAc wood adhesive for all types of laminate and parquet floors, particularly in damp spaces and outside applications, if not exposed to the influence of the weather. Complies with standard NEN-EN 204 D3. (DIN 68602D3) Quick-drying, transparent after drying. Open time +/- 8 minutes clamping time approx. 30-60 minutes. Without filler.

EGALINE 10A FLOOR

Lightly processable and water-resistant self-leveling leveling mortar up to 10 mm based on anhydrite. Suitable for floor heating and cooling.



SQRAPER® GLUECOMB

The Sqraper® has a revolutionary design, namely sharp and angled. The latter property enables you to scrape the bucket almost completely empty, leaving you with less residual waste and thus a higher yield per bucket. The Sqraper® is available in three tooth sizes: B3, B11 and B15. The Sqraper® has an improved smoothness, is free of burrs and has less resistance, which considerably simplifies lubrication. The Sqraper® family consists of three more toothings: B3, B11 and B15, which are eminently suitable for Bijlard parquet adhesives. You can use the Sqraper® A3 especially for the PVC glue FLOOR and our contact adhesives!



PU 2K

Is a fast high quality 2-component adhesive based on polyurethane. For bonding parquet to all possible subfloors provided, these are properly treated with AQUA, UNI PRIMER, PU MULTI PRIMER or EPOXY SCHEM. Can be used indoors and outdoors and is suitable for damp spaces, but not under water. PU 2K is anhydrous so that wood will not expand. Suitable for underfloor heating and cooling.

SPECIALS PVC / ABS FILM ADHESIVES / MMA ADHESIVES



SUPER BOND

High-grade 2-component super glue with activator. Bonds tightly in 10 seconds.



HOTMELT HG 90 / HH 103

Granulated hot melt for edge banding machine (HG 90) and cartridges for Holzher edge banding machine (HH 103). Based on PVA.



HPL-PRIMER

Primer for HPL edging strip. For the pre-treatment of HPL edging strip. Increases the bonding of the hot melt when using an edge banding machine.



CARPETSpray 5920 ORIGINAL ANTI-RAFEL SPRAY

Impregnating agent for increasing cut-resistance of carpet, sisal, coir mats etc.



LATEX RUBBER ADHESIVE 330

60% natural latex rubber adhesive for use with hard and soft board, textiles, felt, veneer etc. Contains no organic solvents.



LAQUER ADHESIVE V3

Laquer adhesive based on synthetic resin dispersion. For bonding the end of multiplex, deal, chipboard or MDF to a flat surface consisting of 1 or 2-component lacquered wood or melamine.



DISPERSION ADHESIVE 12C

Dispersion adhesive based on synthetic resin for indoor applications. For bonding soft PVC, hard polystyrene and polyester film to porous materials.



MMA -MIX-BOND 3.4

Super-fast and extremely strong 2-component adhesive based on Methacrylate. Universally applicable for bonding and repairing virtually all materials. After hardening, the adhesive provides a rigidly strong vandal-proof joint. Final strength up to 300 kg/cm²! Weather and seawater resistant. Fills cracks up to 3 mm. Chemical-resistant. Solvent-free. * Open time 3-4 minutes.





LIJM KLEBO 150MM

Glue applicator for the perfect dosage and uniform distribution of fluid contact adhesive. Gain in time 30% and 20% less adhesive consumption.



GLUE APPLICATOR INCL. ROLLER

For the uniform and controlled application of many different types of adhesive, including white wood adhesive and contact adhesives. with grey rubber or orange sponge roller. Available in 72 mm, 150 mm and 180 mm.



MIXER

High-quality mixer for the optimal mixing of Bijlard PU-2K, Bijlard MS FLOOR BOOSTER and EGALINE.



FRAME CLAMPS

(plastic jaws) 100 en 150 mm. The work piece can be quickly and easily clamped and unclamped with one hand.



FRAME CLAMPS

(metal jaws) 100 en 150 mm. Extremely suitable for welding and construction work.



GLUING BRUSHES

Solvent and water-resistant gluing brushes.



GLUE CONTAINERS

Glue reservoir with brush, can be closed again after use. 450 ml, 900 ml, 1.5 L and 3 L.



PRESSURE ROLL 10 CM

For the pressing of bonded HPL to the substrate, with the purpose of increasing the final strength of the joint.



PRESSURE ROLLER EXTREME

For the pressing of bonded HPL to the substrate, with the purpose of increasing the final strength of the joint.

VACUUM TECHNOLOGY & TAPES



VACUUM BAGS

All vacuum bags are made of 0.75 mm thick transparent seamless Polyurethane and incl. C-strip + tube closing profiles. All other necessary accessories are separately available.

We can make other sized vacuum bags to measure.

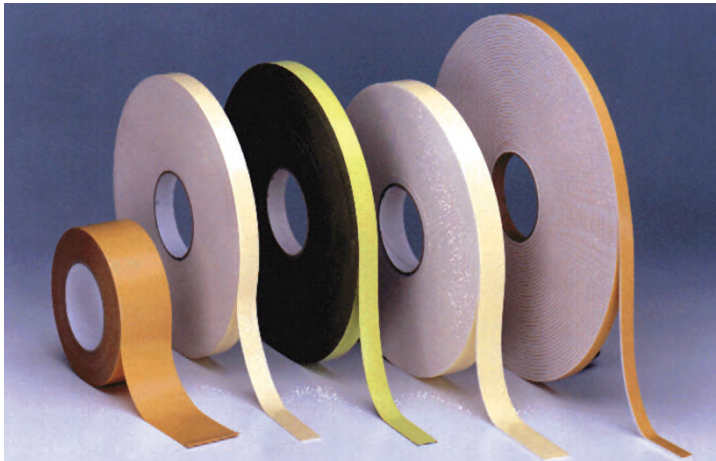
Polyurethane vacuum bag dim. 250 x 160 cm

Polyurethane vacuum bag dim. 310 x 160 cm

Polyurethane vacuum bag dim. 370 x 160 cm

VACUUM FOIL AND ACCESSORIES

Vacuüfóil 50 µ 1500mm. x 100m1, rol á 150 m²



FOAM TAPE DOUBLE-SIDED

| | | | |
|--------|-------|-------|----------|
| 0,82 x | 19 mm | 50m1 | Mirror |
| 0.82 x | 19 mm | 50m1 | bl.t 479 |
| 2.05 x | 25 mm | 25 m1 | type 482 |
| 2.05 x | 12 mm | 25 m1 | type 482 |

BIJLARD CS 60 TAPE

12 x 3 mtr 20 mtr black

SINGLE-SIDED MASKING TAPE

19 mm x 50 mtr type 583

25 mm x 50 mtr type 583

38 mm x 50 mtr type 583

DOUBLE-SIDED

Adhesive tape for carpets

50 mm x 25 mtr type 893

Carpet tape

12 mm x 25 mtr type 899



VACUUM PUMPS

BVP60 Vacuum pump 6 m³/h
BVP60 Vacuum pump 10 m³/h

BVP250 Vacuum pump 25 m³/h
BVP250 Vacuum pump 40 m³/h



WATCH OUR DEMONSTRATION VIDEOS



Bijlard is distributor of the Italian Sait Abrasivi S.p.A. One of the largest abrasives manufacturers in the world. Rollers, strips, deltas, narrow bands, broad bands, discs and soft pads.



SCHUUR-NET

Bijlard schuur-net is a fast, efficient and cost saving revolutionary abrasion technology. With the Bijlard Schuur-net products make history of dust and the continuous clogging of your sanding paper. The patented construction consists of a fine network of polyamide threads to which the grain is applied.



**HIGH QUALITY
MADE FOR AND BY
PROFESSIONALS**

WWW.BIJLARD.COM

BIJLARD[®]
PROFESSIONAL ADHESIVES

BIJLARD INTERNATIONAL - ZOETERMEER - THE NETHERLANDS
TEL: +31 (0)79 - 343 75 38 - INFO@BIJLARD.COM